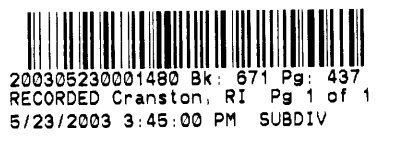


1086-Admin_Sub_12-02_RI.DWG (DISK: 2-1025)



Plot Card 671
Map 437

EXISTING EASEMENTS AND RIGHTS OF WAY:

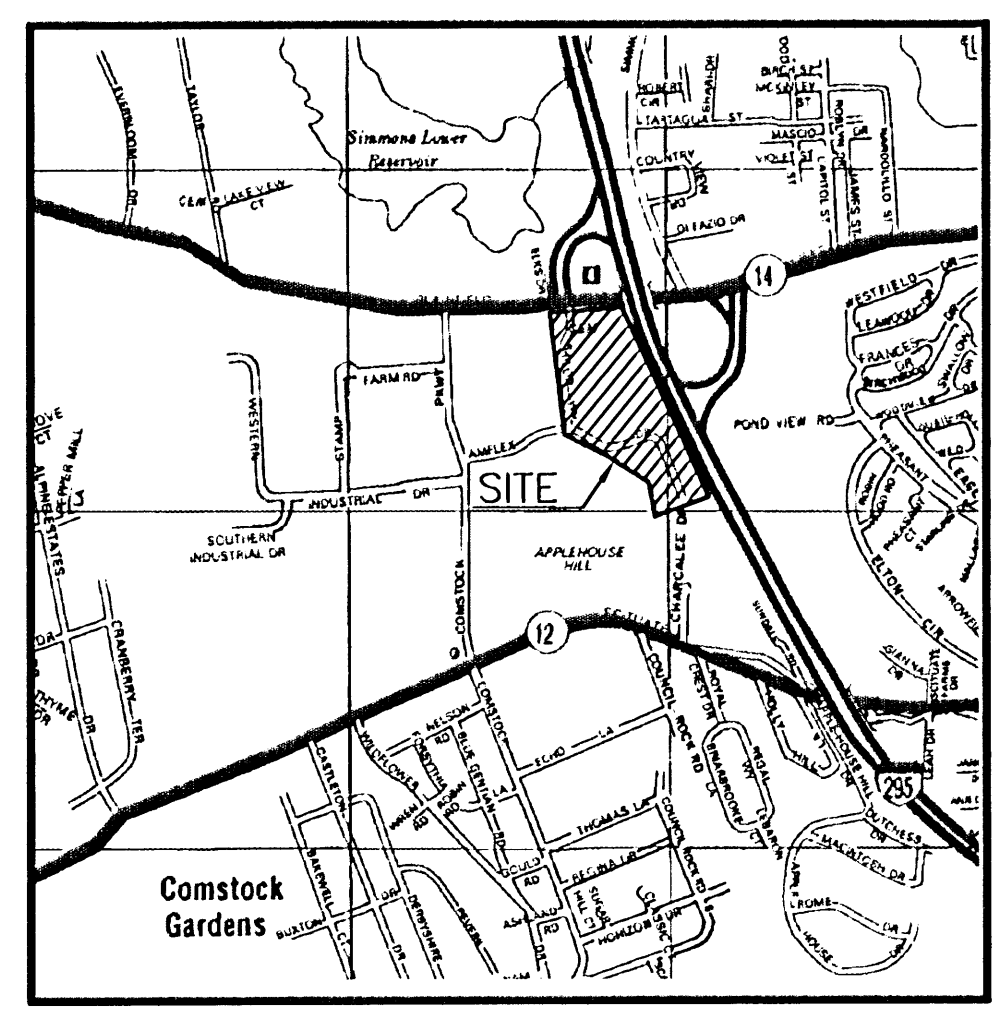
AGREEMENT TO GRANT SEWER EASEMENT TO FAUNCE REALTY BK. 414, PG. 487

RIGHT OF WAY TO FAUNCE REALTY OVER EXISTING OR FUTURE ACCESS ROAD BK.414, PG. 485

EASEMENT TO FAUNCE REALTY CORPORATION, BK. 390, PG. 88

EASEMENT TO NARRAGANSETT ELECTRIC AND NEW ENGLAND TELEPHONE, BK. 412, PG 714

AGREEMENT TO CONSTRUCT ROAD. BK. 414, PG. 487

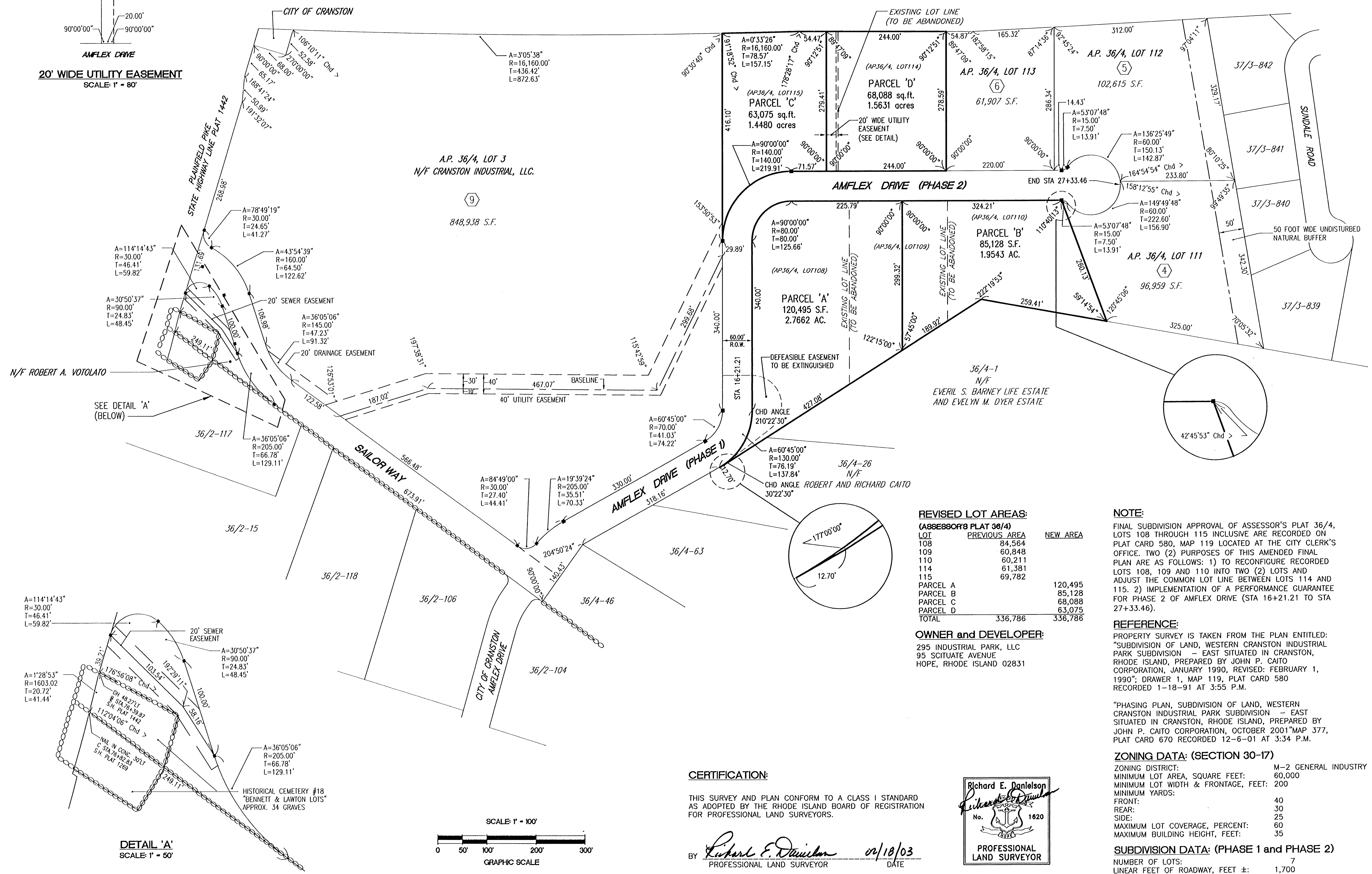
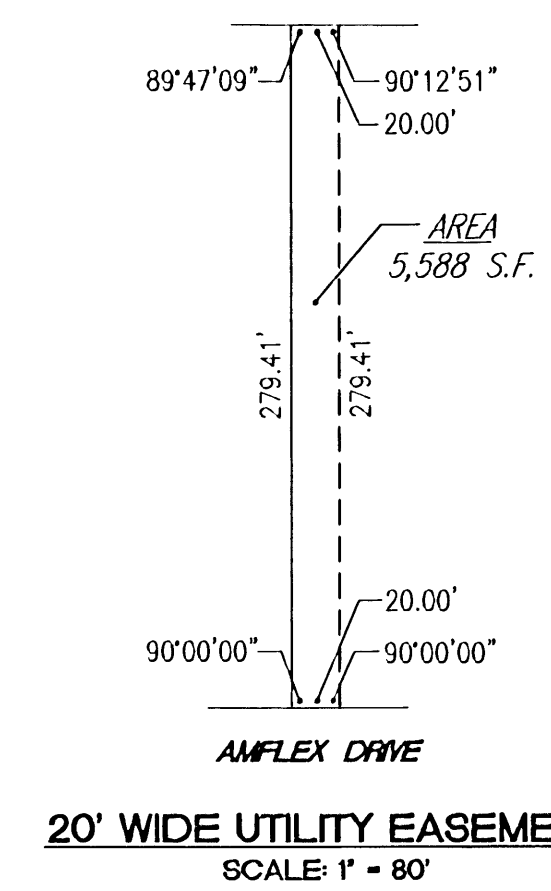


LOCATION MAP NOT TO SCALE

CITY PLANNING COMMISSION
 Approved by the
Michael DePina
 Administrative Officer
 Date: May 23, 2003
 Any and all conditions imposed by the Commission are hereby incorporated. Refer to minutes of 3/6/03, 4/16/03 meeting. Adopted 5/23/03

- LEGEND:**
- GRANITE BOUND TO BE SET
 - (X) SUBDIVISION LOT NUMBER
 - RECORDED LOT LINE
 - NEW LOT LINE
 - - - EXISTING LOT LINE (TO BE ABANDONED)
 - - - UNDISTURBED BUFFER
 - - - EXISTING UTILITY EASEMENT
 - ○ ○ ○ ○ EXISTING STONE WALL
 - RHODE ISLAND HIGHWAY BOUND
 - A.P. 36/4, LOT 109 OR 36/4-1 ASSESSOR'S PLAT, LOT NUMBER
 - - - PROPOSED UTILITY EASEMENT

INTERSTATE HIGHWAY 295 (STATE FREEWAY LINE PLAT 1442)



**AMENDED FINAL PLAN
 PHASE 2
 WESTERN CRANSTON INDUSTRIAL PARK
 SUBDIVISION - EAST**

SITUATED IN
 CRANSTON, RHODE ISLAND



FEBRUARY, 2003

THIS PLAT SHALL BE INDEXED BY THE FOLLOWING STREETS:
 SAILOR WAY and AMFLEX DRIVE